



Longfield Solar Farm

PINS Ref: EN010118

Consultation Report Appendices

Appendix L-1

Document Reference: EN010118/APP/5.13

Revision 1

February 2022

Longfield Solar Energy Farm Ltd

APFP Regulation 5(2)(q)

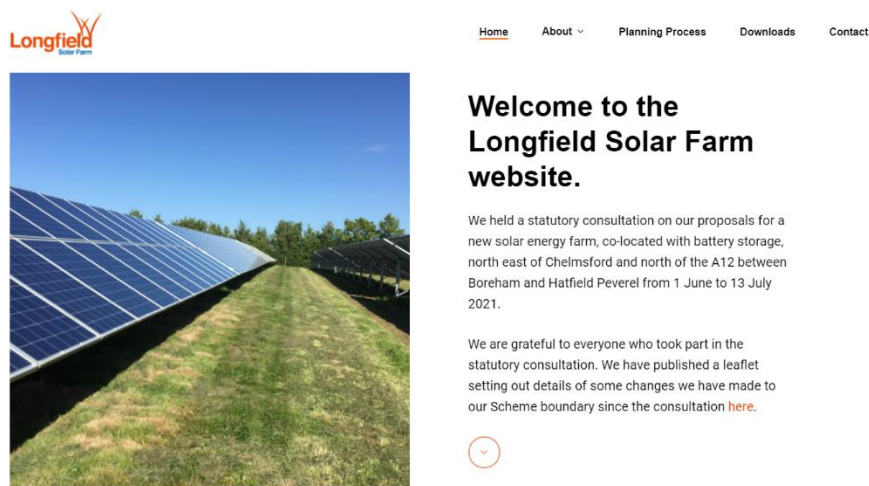
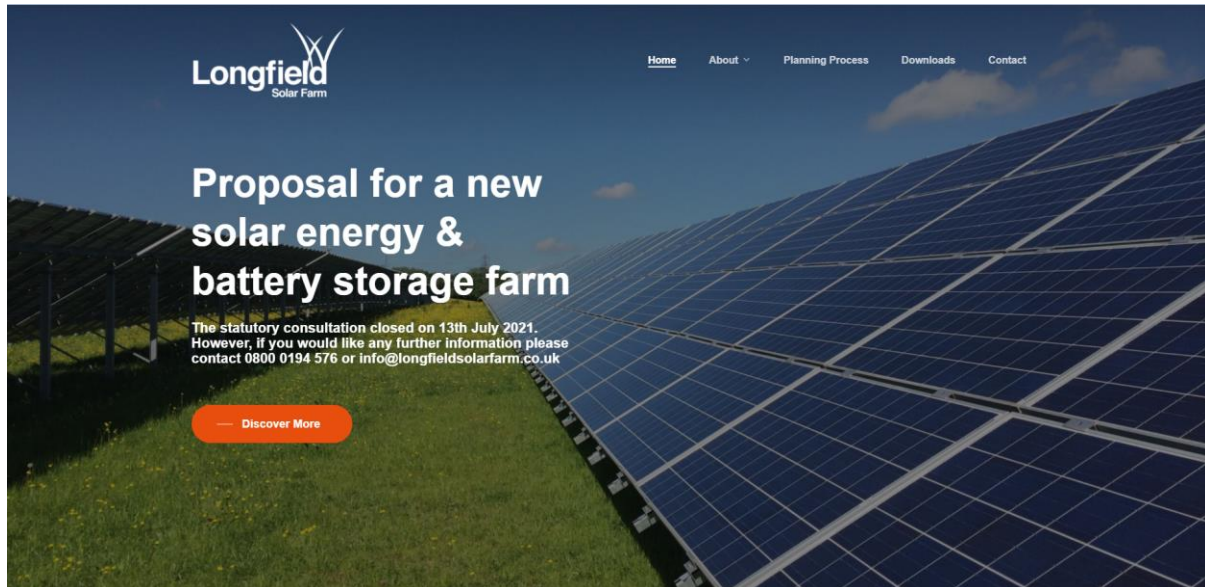
Planning Act 2008

Infrastructure Planning (Applications: Prescribed Forms and Procedure)
Regulations 2009

Table of Contents

Appendix L-1: Screenshots of scheme website.....	1
---	----------

Appendix L-1: Screenshots of scheme website





What is Longfield Solar Farm?

Longfield Solar Farm is a proposal for a new solar energy farm, co-located with battery storage, to help meet the country's need for low carbon energy.

[Find out more](#)



Why is Longfield Solar Farm needed?

The way that we generate and consume energy in the UK is changing. The Government has committed to achieving 'net zero' carbon emissions by 2050, including in the way we generate our electricity.

[Find out more](#)





Home About Planning Process Downloads Contact

Who is behind Longfield Solar Farm?

Longfield Solar Farm is a joint venture between two companies with a long history in helping meet the country's need for renewable energy.

[Find out more](#)

For further information,
 please contact us

[Get in touch](#)



About

- [What is Longfield?](#)
- [Why is it needed?](#)
- [Who is behind it?](#)
- [When will it happen?](#)

Helpful Links

- [Home](#)
- [Planning Process](#)
- [Contact](#)



Home About Planning Process Downloads Contact

What is Longfield Solar Farm?

Longfield Solar Farm is a proposed new solar energy farm, co-located with battery storage. The proposals include grid infrastructure to connect Longfield Solar Farm to the National Grid and any necessary and appropriate environmental mitigation. We also need to secure development consent for infrastructure needed for building and maintaining Longfield Solar Farm such as construction compounds and site offices.

We have secured a grid connection agreement which would allow us to export or import up to 500MW of electricity to and from the National Grid. The proposed generation capacity of the scheme means it is a Nationally Significant Infrastructure Project (NSIP) – we set out more information on this on the [Planning process page](#).

[Contact Us](#)





Why is Longfield Solar Farm needed?

The way that we generate and consume energy in the UK is changing. The Government has committed to achieving 'net zero' carbon emissions (compared to 1990 levels) by 2050.

That means older means of energy generation, like old fossil fuel power stations, are being taken out of use. There is an urgent need for new, cleaner, forms of energy generation to replace them. Solar farms like Longfield could have a major role to play in meeting this need.

Including battery storage in the proposals allows us to make more efficient use of the solar panels. This means we can store energy at times of low demand and release it when it is needed.

[Contact Us](#)



Who is behind Longfield?

Longfield Solar Farm is a joint venture between two companies with a long history in helping meet the country's need for renewable energy.

EDF Renewables has more than 25 years' worth of experience in delivering renewable energy projects in more than 20 countries around the world. In the UK, it provides much needed new affordable low carbon energy through 36 wind farms and one of the UK's largest battery storage units (together totalling almost 1GW). It has a portfolio of rooftop solar and grid scale solar energy generation in development.

Padero Solar has helped to develop more than 25 Solar Farms in the UK, and this has delivered over 390MW of renewable energy. Padero Solar is part of a group of three companies. These include PS Renewables, who are behind a number of solar projects, including Eveley Solar Farm (Hampshire) and PSH Operations, an Operations & Maintenance business managing over 1.3GW of Solar Farm assets in the UK.

You can find out more at their websites: <https://www.edf-re.uk/> and <http://paderosolar.com/>

[Contact Us](#)





Public consultation

We held a statutory public consultation on our proposals between 1 June and 13 July 2021.

This took place in line with the requirements of the Planning Act 2008. We set out the way we will meet the requirement for projects of this type to consult with the local community in a document called a Statement of Community Consultation.

We are grateful to everyone who responded to the consultation. We will carefully consider all of the comments we receive as part of the consultation and set out how we have had regard to them in a Consultation Report. This will form part of our DCO application.



Find out more

You can find out more by:

The documents we made available during the consultation are still available here. You can find out more by:

- Reading an information booklet we have published as part of the consultation
- Viewing a [virtual exhibition](#)
- Reading the Preliminary Environmental Information Report, available in the [Downloads](#) section

If you have questions, you can:

- View the recordings of our Q&A webinars, from Saturday 5 June 2021, [here](#), and Thursday 10 June 2021, [here](#).
- Email info@longfieldsolarfarm.co.uk
- Phone 0808 168 7925

[Contact Us](#)



Planning Process

Longfield Solar Farm is a Nationally Significant Infrastructure Project (NSIP). This is because of the scale of the contribution it would make to the country's energy needs.

This means we need to apply to the Secretary of State for Business, Energy and Industrial Strategy for a Development Consent Order (DCO).

DCO applications are managed by the Planning Inspectorate (PINS) on behalf of the Secretary of State. You can find out more about the planning process for the proposals at their website: <https://infrastructure.planninginspectorate.gov.uk/>

[Contact Us](#)





Downloads

This page includes links to consultation documents and other information. It will be updated over time as documents are published.

Statutory consultation

- [Statement of Community Consultation](#)
- [Consultation booklet](#)
- [Consultation questionnaire](#)
- [Virtual exhibition](#)
- [Section 48 notice](#)
- [Preliminary Environmental Information Report](#)

Non-statutory consultation

- [Consultation booklet](#)
- [Site Features and Concept Master](#)
- [Consultation questionnaire](#)
- [Webinar 1](#)
- [Webinar 2](#)

[Contact Us](#)



The statutory consultation closed on 13th July 2021. However, if you would like any further information please contact 0800 0194 576 or info@longfieldsolarfarm.co.uk



**Got a question?
No problem.**

For further information, please contact us on
0800 0194 576 or info@longfieldsolarfarm.co.uk.

[Submit](#)

About

- What is Longfield?
- Why is it needed?
- Who is behind it?
- When will it happen?

Helpful Links

- Home
- Planning Process
- Contact